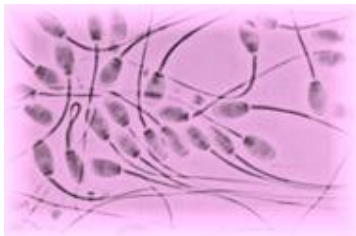




## Advanced Breeding Services for Sheep



ALL PRICES QUOTED ARE EXCLUSIVE OF  
VAT AT THE CURRENT RATE



College Road, Cullompton, Devon, EX15 1TG.

Phone: 01884 32228

Mobile: 07595205940

E-mail: [duncan@valevetgroup.com](mailto:duncan@valevetgroup.com)

[www.valevetgroup.com](http://www.valevetgroup.com)



These services are available to pedigree and commercial flocks alike.

## Semen Freezing

The benefits of semen freezing are

- Insurance against infertility or death
- Resolves biosecurity issues if you share rams with other breeders
- Preserve certain genetics for future use
- Potential to generate income from semen sales

Semen is collected as the ram jumps synchronised teaser ewes. The ejaculate is examined microscopically, graded and diluted. The semen is then frozen in pellets. The final quality control check takes place after a sample pellet is thawed to check post thawing viability and motility.

The pellets can be stored in liquid nitrogen indefinitely.

## Laparoscopic AI Service

The main benefits are:

- You need to invest in fewer rams than would be needed with natural mating – increased ram power.
- As fewer rams are needed, the savings can be spent on rams with higher genetic potential.
- The use of proven sires can be maximised.
- You can use frozen semen from a reference or co-owned ram.
- As the ewes are synchronised the lambing period is defined allowing for more efficient use of labour.
- A compact lambing period saves labour, simplifies everyday management thus enabling a higher level of husbandry. This minimises disease, giving you a healthier crop of lambs that are easier to market when finished.
- Can help in the management of a closed-flock policy, maintaining flock health by the reduction of “bought-in” stock and hence diseases.



## What's involved?

Ewes must be synchronised so that they are in season on the day of AI thereby allowing the AI to be done at a “fixed time”.

Your AI date is pre-arranged and a programme detailing the “step by step” instructions is sent to you.

## The AI Day

Stress for all involved needs to be kept to a minimum!

- Need enough staff, ideally 3, people capable of lifting ewes onto the AI cradles.
- Good handling/penning facilities for the ewes and ram if fresh semen is to be collected.
- A covered building with an even concrete floor and minimal draughts with a supply of fresh clean water and electricity is required.
- Ewes are given a sedative injection and long acting antibiotic.
- They are lifted onto an AI cradle and restrained.
- Ewes are then tipped up to allow a better view of the uterus with the laparoscope.
- 2 small holes are made in the body wall and the scope and AI gun inserted.
- Semen is then deposited directly into the uterine horn.

## Embryo Transfer

Ewes are synchronised using sponges in the same way as AI.

Ewes are ‘super ovulated’ with a series of injections over 4 days, so they produce more eggs when they come into season.

The eggs are then fertilised using laparoscopic AI

The resulting embryos are then taken out surgically after 6 days and implanted into synchronised recipient ewes.

## The Benefits of ET

- Speeds up the rate of genetic improvement in your flock
- Enables you to increase the number of progeny from a particular ewe.
- Enables you to have lambs from a ewe that is unable to maintain a pregnancy, or rear a lamb.
- Eliminates the chance of importing diseases when buying in stock

